



Formulated For The Professionals
Adhesives & Sealants

VT-636 MS Floor and Wall Bonds

One-component Elastic Adhesive

VT-636 MS Floor and Wall is a universal construction adhesive based on advanced MS Polymer technology. It cures on exposure to atmospheric moisture, and forms an elastic bond on general building materials, including porous and non-porous surfaces, floors, wall decorative and panels. The adhesive can be troweled easily. It has good weathering and UV resistance properties. This is a safe product as it does not contain hazardous materials like isocyanate, solvents, halogens, and acid.

Applications:

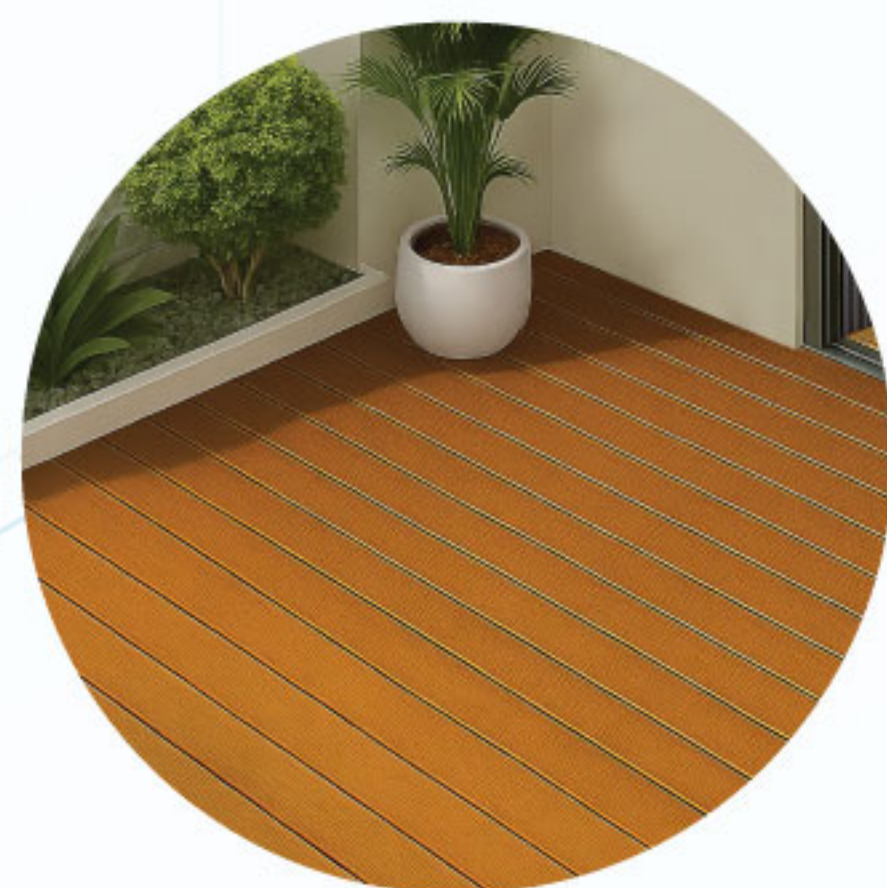
Ideal for bonding all types of building materials – including porous and non-porous substrates on horizontal and vertical surfaces: concrete, concrete screeds, cement / sand screeds, anhydrite screeds, wood, artificial grass, plywood, cured leveling compounds, epoxy membrane, OSB (underlayment grade), particle board, gypsum board, ceramic tiles, stone, terrazzo, radiant heated subfloors, metal decking, steel, aluminum, etc.

Available colours: White

Item Code	Content	Carton Quantity
VT-63616K VT-636S	16 kg Pail (2 x 8 kg Pack) 600 ml Sausage	- 20 / Carton



FLUTED WALL



WOOD FLOORING



Features

- Single-component
 - Ready for use, no mixing required
- Resistant to aging
 - Permanently elastomeric
- Workability – Easy to tool
- Indoor and outdoor application
- Paintable
- Excellent adhesion on most substrates
- Notched trowel ridges hold firm
 - Minimize hollow spots by bridging gaps
- Free of water, 100% solid content
 - No dimensional changes in wood
- Free of isocyanate and formaldehyde
 - Non-hazardous formulation
- Easy surface clean up
 - Easy cleaning on substrates
- Non-flammable, non-hazardous, stable shelf life – Easy storage



VITAL TECHNICAL SDN. BHD. Co.No.: 200201021558 (589221-K)

+603 6094 2088 (Tel) +603 6099 2930 (Fax)

sales@vitaltechnical.com

www.vitaltechnical.com



A member of

NIPPON PAINT